



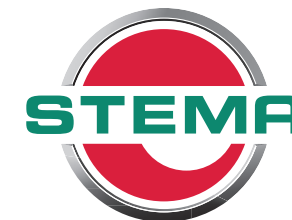
Cargo trailer S-BOX & P-BOX



” The new cargo trailer is also a totally a child of the STEMA family: robust, well-thought-out to the last detail, and can go the distance. I am proud of it. “

*Matthias Kieslich -
designer*





QUALITY MADE IN SAXONY.

Our **S-BOX** is 100% manufactured in Großenhain by our case construction specialists. From the cutting of the sandwich panels to the leak test using smoke cannons, everything passes through just a few, selected hands. It is important to us that we can control and steer all processes in order to keep our **STEMA promise** to the customer. We have managed to create a production site with our newly equipped box hall that promises what it delivers:
Quality from Großenhain.



Standard equipment

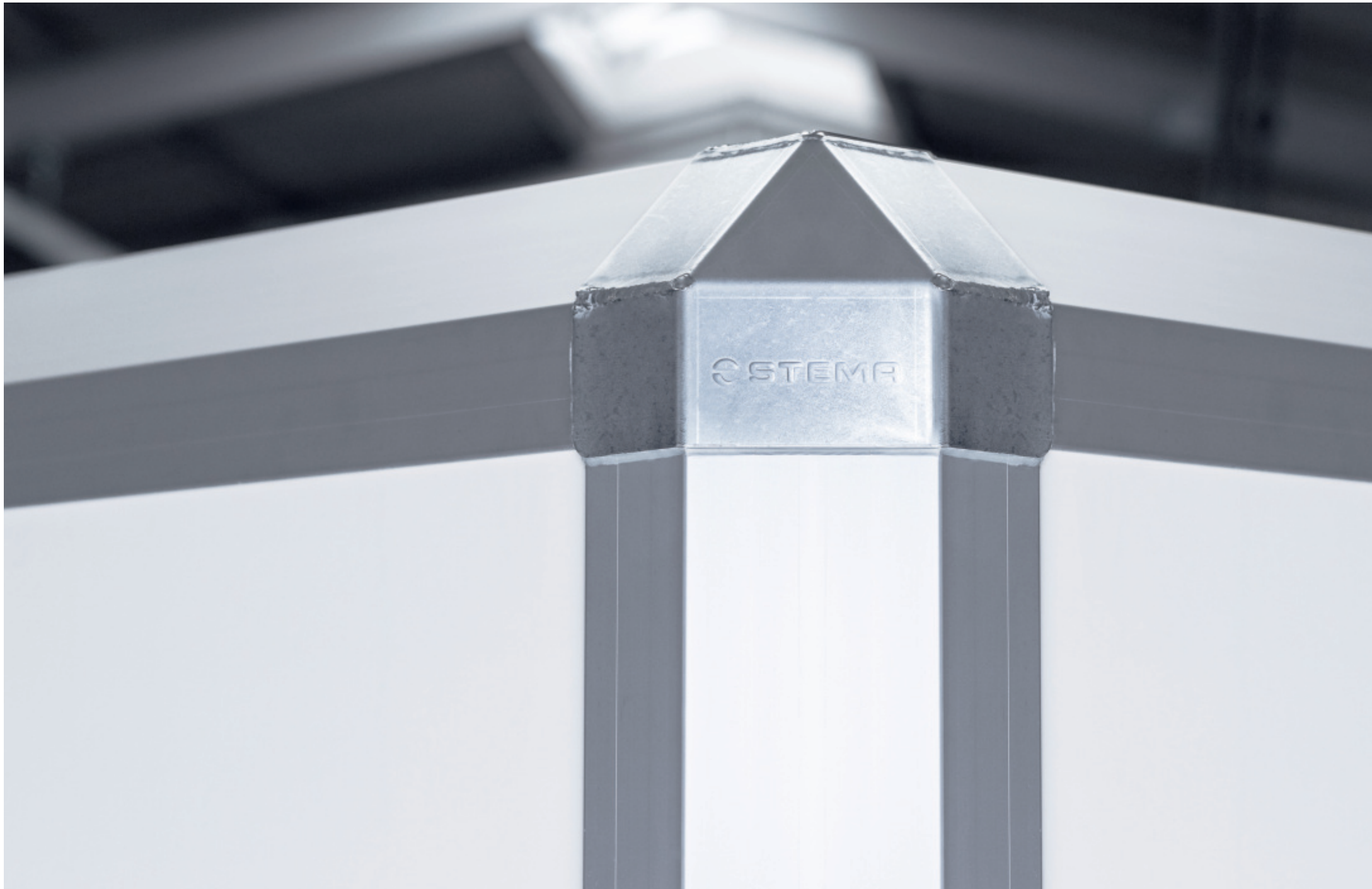
- ✓ Double-leaf door
- ✓ Espagnolette made of stainless steel
- ✓ Bumper
- ✓ Water-proof screen printed wooden floor
- ✓ Aluminium beams with variable lashing points
- ✓ Fenders with mud flaps
- ✓ License plate holder with license plate flap
- ✓ Stainless steel door hinges
- ✓ Support legs with clamp**
- ✓ Position lights*



- ✓ Ball head coupling
- ✓ V-drawbar
- ✓ Manouvering handle
- ✓ Wheel chocks
- ✓ shock absorbers (100 km/h preparation)

OUR NEW CARGO TRAILER

The new box trailer is a constructive new development with its own design language. Not only the 45° angled corners of the roof and wall profiles stand for the **new design**. All standard parts are made with highest precision of stainless steel. It is built to transport goods and technology safely under all circumstances, day and night. The new STEMA S-Box appears to be one self-contained whole, and yet it is the combination of many elements, which make our box trailers into a **STEMA** original.





YOUR SAFETY IS OUR DEMAND.

The safe storage of your objects has always been our highest priority. This is exactly what the innovative lashing solution in the cargo trailer allows. Even in the standard version, diagonal bracing from floor to ceiling is possible from any point. On request, there are further lashing solutions available which work with flexibly lockable rods and meet the highest demands on load securing.

THOUGHT OUT TO THE LAST DETAIL.

The STEMA box trailer shows its strengths exactly when they are needed. Years of experience in building box trailers and intensive testing have been incorporated into the development process during the new design. We have concentrated on the essentials and tried to implement these attributes with the utmost perfection. From the coupling to the rear lights, a model has been created of which we are all very proud.



1 Lock

The weatherproof stainless steel cover protects the lock of the espagnolette from all external factors.

2 Tightness

The S-BOX already delivered excellent results for the salt water drives on the test site. In addition, each individual manufactured trailer is checked for leaks using smoke before shipment.

3 Anti-theft device

Provisions have been made against theft. The hinge bolts are secured in place with a nut that cannot be opened with standard tools.

4 45° angled corner

The 45° angled corners of the roof and wall beams with stamped STEMA logo round out the trailer and the new design.

5 Sandwich panels

The innovative 25 mm thick sandwich panel remains dimensionally stable under all weather conditions. This is ensured by the GRP planking on both sides, which encloses PET foam in a hub structure.

6 Position lights

The position lights are standard equipment on trailers with total widths of 1800 mm and up, and ensure that the outer contours of the trailer are clearly recognisable in the dark.





technical data – single axle

usable dimensions length x width x height in mm	total weight (kg)	payload (kg)	external dimensions length x width x height	loading height (mm)	rim size	braked/support wheel/ shock absorbers	model	article number
2500 x 1245 x 1895	1000	565	3705 x 1770 x 2580	635	155/80 R13	✓ / ✓ / ✓	STPK 02 10-25-13.1.S18.2	24221.070
	1300	865	3705 x 1770 x 2590	645	165/80 R13	✓ / ✓ / ✓	STPK 02 13-25-13.1.S18.2	24223.070
	1300	825	3710 x 2020 x 2575	630	165/80 R13	✓ / ✓ / ✓	STPK 02 13-25-15.1.S18.2	24232.070
	1500	1020	3705 x 2030 x 2555	610	195/50 R13	✓ / ✓ / ✓	STPK 02 15-25-15.1.S18.2	24233.070
3000 x 1495 x 1895	1300	805	4205 x 2030 x 2570	630	165/80 R13	✓ / ✓ / ✓	STPK 02 13-30-15.1.S18.2	24247.070
	1500	975	4205 x 2030 x 2555	610	195/50 R13	✓ / ✓ / ✓	STPK 02 15-30-15.1.S18.2	24245.070
3000 x 1795 x 1895	1500	905	4640 x 2340 x 2555	610	195/50 R13	✓ / ✓ / ✓	STPK 02 15-30-18.1.S18.2	24278.070

technical data – tandem axle

Usable dimensions length x width x height in mm	total weight (kg)	payload (kg)	external dimensions length x width x height	loading height (mm)	rim size	braked/support wheel/ shock absorbers	model	article number
2500 x 1245 x 1895	2000	1460	3705 x 1800 x 2580	635	155/80 R13	✓ / ✓ / ✓	STPK 02 20-25-13.2.S18.2	24222.070
2500 x 1495 x 1895	2000	1435	3710 x 2050 x 2565	620	155/80 R13	✓ / ✓ / ✓	STPK 02 20-25-15.2.S18.2	24236.070
	2700	2115	3695 x 2050 x 2540	595	195/50 R13	✓ / ✓ / ✓	STPK 02 27-25-15.2.S18.2	24235.070
3000 x 1495 x 1895	2000	1395	4205 x 2050 x 2565	620	155/80 R13	✓ / ✓ / ✓	STPK 02 20-30-15.2.S18.2	24249.070
	2700	2065	4185 x 2050 x 2535	595	195/50 R13	✓ / ✓ / ✓	STPK 02 27-30-15.2.S18.2	24250.070
3000 x 1795 x 1895	2000	1315	4635 x 2350 x 2560	620	155/80 R13	✓ / ✓ / ✓	STPK 02 20-30-18.2.S18.2	24279.070
	2700	2005	4625 x 2350 x 2555	610	195/50 R13	✓ / ✓ / ✓	STPK 02 27-30-18.2.S18.2	24280.070
	3000	2305	4625 x 2350 x 2555	610	195/50 R13	✓ / ✓ / ✓	STPK 02 30-30-18.2.S18.2	24281.070
3000 x 1795 x 2095	2700	1990	4625 x 2350 x 2755	610	195/50 R13	✓ / ✓ / ✓	STPK 02 27-30-18.2.S20.2	24280.080
	3000	2290	4625 x 2350 x 2755	610	195/50 R13	✓ / ✓ / ✓	STPK 02 30-30-18.2.S20.2	24281.080
3000 x 1995 x 1895	2700	1970	4630 x 2550 x 2535	595	195/50 R13	✓ / ✓ / ✓	STPK 02 27-30-20.2.S18.2	24287.070
3000 x 1995 x 2095	2700	1955	4630 x 2550 x 2735	595	195/50 R13	✓ / ✓ / ✓	STPK 02 27-30-20.2.S20.2	24287.080
4000 x 1795 x 1895	2700	1890	5620 x 2350 x 2540	595	195/50 R13	✓ / ✓ / ✓	STPK 02 27-40-18.2.S18.2	24161.070
	3500	2670	5650 x 2350 x 2555	610	195/50 R13	✓ / ✓ / ✓	STPK 02 35-40-18.2.S18.2	24163.070
4000 x 1795 x 2095	3500	2615	5650 x 2350 x 2755	610	195/50 R13	✓ / ✓ / ✓	STPK 02 35-40-18.2.S20.2	24163.080
4000 x 1995 x 1895	3500	2510	5650 x 2550 x 2555	610	195/50 R13	✓ / ✓ / ✓	STPK 02 35-40-20.2.S18.2	24167.070
4000 x 1995 x 2095	3500	2495	5650 x 2550 x 2755	610	195/50 R13	✓ / ✓ / ✓	STPK 02 35-40-20.2.S20.2	24167.080



standard equipment

- ✓ Four different variants of rear doors
- ✓ Espagnolette made of stainless steel
- ✓ Water-proof screen printed wooden floor
- ✓ Aluminium beams with variable lashing points
- ✓ welded and hot-zinc-dipped base frame
- ✓ License plate holder
- ✓ Stainless steel door hinges
- ✓ Support legs with clamp**
- ✓ Position lights*
- ✓ ball head coupling



- ✓ V-drawbar
- ✓ Manouevring handle
- ✓ Wheel chocks
- ✓ airation

HIGHLIGHTS OF NEW P-BOX.

The new **P-BOX** is the perfect entry model to the world of box trailers. With its **integrated ventilation**, **four different variants of doors/flaps**, it offers a lot of scope for your individual transport of goods. Because of its significantly more stable new construction, it defies every situation. Of course we take care, that every component is conform to our very high STEMA standards.

OBSESSED WITH DETAIL.

The STEMA P-BOX went through many processes before it was ready for the market. It was our claim to create a modular system, that leaves nothing to be desired. With 45 different models up to a length of 3 m and the proven lashing system from our S-BOX, we want to offer you as many configuration options as possible.



1 Airation

For optimal ventilation of the interior of P-Box are integrated ventilation slots standard in every model.

2 Tightness

The perfect protection against wind and weather. No splash water penetrates, but an optimal air exchange is still guaranteed.

3 Anti-theft device

Provisions have been made against theft. The hinge bolts are secured in place with a nut that cannot be opened with standard tools.

4 Corner

The 90° angled corners of the roof and wall beams with stamped STEMA logo round out the trailer and the new design.

5 Plywood panels

The 15 mm thick plywood panel remains dimensionally stable under all weather conditions. This is ensured by the GRP coating, which encloses plywood-panels.

6 Clearance lights

The LED clearance lights are fitted as standard from a total width of 1500 mm and ensure that the outer contours are clearly visible in the dark.



7 Rear door variants

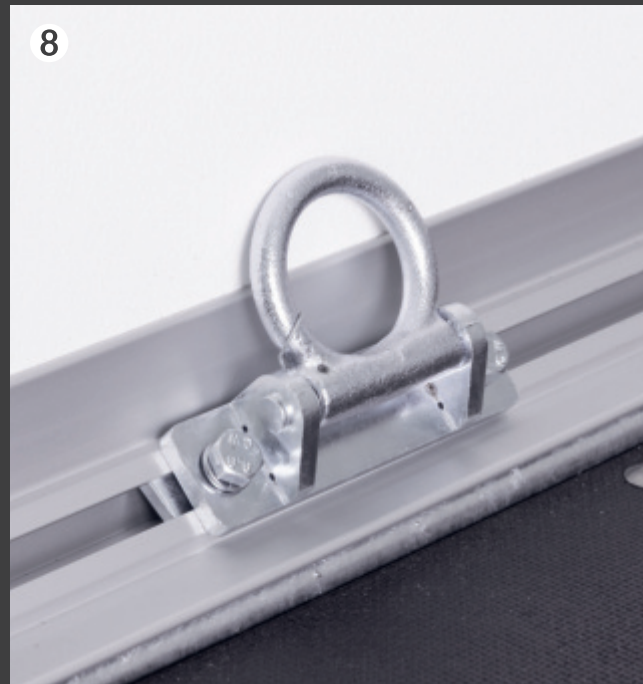
The right rear door for every application. Be it a double-wing or a single-wing door, a tailgate or a rear ramp.

8 Ring screw

Four individually adjustable ring screws allow for the the transported goods to be fixed in every position in the cargo superstructure. Strain per ring 400 daN.

9 Main joint

The brake rigging is passed through a small ball joint and thereby prevents the brake from engaging unintentionally while driving over uneven surfaces.





technical data – single axle

usable dimensions length x width x height in mm	total weight (kg)	payload (kg)	external dimensions length x width x height	loading height (mm)	rim size	braked/support wheel/ shock absorbers	model	article number
2140 x 1315 x 1540	750	391	3605 x 1760 x 2100	550	145/80 R13	✗ / ✓ / ✗	STPK 01 7.5-21-13.1.P15.1 Rear door	26023.061
2550 x 1315 x 1540	750	357	4160 x 1760 x 2100	550	145/80 R13	✗ / ✓ / ✗	STPK 01 7.5-25-13.1.P15.1 Rear door	26024.061
2140 x 1315 x 1540	1300	875	3685 x 1780 x 2115	550	165 R13C	✓ / ✓ / ✗	STPK 02 13-21-13.1.P15.1, Rear door	26025.061
2550 x 1315 x 1540	1300	845	4240 x 1775 x 2115	550	165 R13C	✓ / ✓ / ✗	STPK 02 13-25-13.1.P15.1, Rear door	26026.061
		835	4240 x 1780 x 2115	550	165 R13C	✓ / ✓ / ✗	STPK 02 13-25-13.1.P15.1, Tailgate	26026.063
		805	4260 x 1780 x 2115	550	165 R13C	✓ / ✓ / ✗	STPK 02 13-25-13.1.P15.1, Ramp	26026.064
2550 x 1565 x 1540	1300	795	4265 x 2030 x 2115	550	165 R13C	✓ / ✓ / ✗	STPK 02 13-25-15.1.P15.1, Rear door	26027.061
		790	4265 x 2030 x 2115	550	165 R13C	✓ / ✓ / ✗	STPK 02 13-25-15.1.P15.2, Hinged doors	26027.062
		785	4265 x 2030 x 2115	550	165 R13C	✓ / ✓ / ✗	STPK 02 13-25-15.1.P15.1, Tailgate	26027.063
		750	4285 x 2030 x 2115	550	165 R13C	✓ / ✓ / ✗	STPK 02 13-25-15.1.P15.1, Ramp	26027.064
		750	4265 x 2030 x 2415	550	165 R13C	✓ / ✓ / ✗	STPK 02 13-25-15.1.P18.2, Hinged doors	26028.062
2550 x 1565 x 1840	1300	755	4265 x 2030 x 2415	550	165 R13C	✓ / ✓ / ✗	STPK 02 13-25-15.1.P18.1, Tailgate	26028.063
		715	4285 x 2030 x 2415	550	165 R13C	✓ / ✓ / ✗	STPK 02 13-25-15.1.P18.1, Ramp	26028.064
	1500	930	4265 x 2045 x 2400	540	195/60 R12C	✓ / ✓ / ✗	STPK 02 15-25-15.1.P18.2, Hinged doors	26029.062
		930	4265 x 2045 x 2400	540	195/60 R12C	✓ / ✓ / ✗	STPK 02 15-25-15.1.P18.1, Tailgate	26029.063
3050 x 1565 x 1840	1300	900	4285 x 2045 x 2400	540	195/60 R12C	✓ / ✓ / ✗	STPK 02 15-25-15.1.P18.1, Ramp	26029.064
		680	4765 x 2030 x 2415	550	165 R13C	✓ / ✓ / ✗	STPK 02 13-30-15.1.P18.2, Hinged doors	26030.062
		685	4765 x 2030 x 2415	550	165 R13C	✓ / ✓ / ✗	STPK 02 13-30-15.1.P18.1, Tailgate	26030.063
	1500	640	4785 x 2030 x 2415	550	165 R13C	✓ / ✓ / ✗	STPK 02 13-30-15.1.P18.1, Ramp	26030.064
		880	4765 x 2050 x 2400	540	195/60 R12C	✓ / ✓ / ✗	STPK 02 15-30-15.1.P18.2, Hinged doors	26031.062
		885	4765 x 2050 x 2400	540	195/60 R12C	✓ / ✓ / ✗	STPK 02 15-30-15.1.P18.1, Tailgate	26031.063
		840	4785 x 2050 x 2400	540	195/60 R12C	✓ / ✓ / ✗	STPK 02 15-30-15.1.P18.1, Ramp	26031.064

technical data – tandem axle

usable dimensions length x width x height in mm	total weight (kg)	payload (kg)	external dimensions length x width x height	loading height (mm)	rim size	braked/support wheel/ shock absorbers	model	article number
2550 x 1565 x 1535	2000	1400	4265 x 2055 x 2105	540	155/80 R13	✓ / ✓ / ✗	STPK 02 20-25-15.2.P15.2, Hinged	26040.062
		1405	4265 x 2055 x 2105	540	155/80 R13	✓ / ✓ / ✗	STPK 02 20-25-15.2.P15.1, Rear door	26040.061
		1400	4265 x 2055 x 2105	540	155/80 R13	✓ / ✓ / ✗	STPK 02 20-25-15.2.P15.2, Tailgate	26040.063
		1365	4285 x 2055 x 2105	540	155/80 R13	✓ / ✓ / ✗	STPK 02 20-25-15.2.P15.2, Ramp	26040.064
	2700	2090	4265 x 2055 x 2115	550	165 R13C	✓ / ✓ / ✗	STPK 02 27-25-15.2.P15.2, Rear door	26042.061
		2085	4265 x 2055 x 2115	550	165 R13C	✓ / ✓ / ✗	STPK 02 27-25-15.2.P15.2, Hinged	26042.062
		2050	4285 x 2055 x 2115	550	165 R13C	✓ / ✓ / ✗	STPK 02 27-25-15.2.P15.1, Ramp	26042.064
		2085	4265 x 2055 x 2115	550	165 R13C	✓ / ✓ / ✗	STPK 02 27-25-15.2.P15.1, Tailgate	26042.063
		2550 x 1565 x 1835	2000	1325	4285 x 2055 x 2405	540	155/80 R13	✓ / ✓ / ✗
1360	4265 x 2055 x 2405			540	155/80 R13	✓ / ✓ / ✗	STPK 02 20-25-15.2.P18.2, Hinged	26041.062
1360	4265 x 2055 x 2405			540	155/80 R13	✓ / ✓ / ✗	STPK 02 20-25-15.2.P18.1, Tailgate	26041.063
2700	2050		4265 x 2055 x 2415	550	165 R13C	✓ / ✓ / ✗	STPK 02 27-25-15.2.P18.2, Hinged	26043.062
	2050		4265 x 2055 x 2415	550	165 R13C	✓ / ✓ / ✗	STPK 02 27-25-15.2.P18.1, Tailgate	26043.063
	2015		4285 x 2055 x 2415	550	165 R13C	✓ / ✓ / ✗	STPK 02 27-25-15.2.P18.1, Ramp	26043.064
3050 x 1565 x 1835	2000	1300	4765 x 2055 x 2400	540	155/80 R13	✓ / ✓ / ✗	STPK 02 20-30-15.2.P18.2, Hinged	26044.062
		1300	4765 x 2055 x 2405	540	155/80 R13	✓ / ✓ / ✗	STPK 02 20-30-15.2.P18.1, Tailgate	26044.063
		1265	4785 x 2055 x 2405	540	155/80 R13	✓ / ✓ / ✗	STPK 02 20-30-15.2.P18.1, Ramp	26044.064
	2700	1990	4765 x 2055 x 2415	550	165 R13C	✓ / ✓ / ✗	STPK 02 27-30-15.2.P18.2, Hinged	26045.062
		1990	4765 x 2055 x 2415	550	165 R13C	✓ / ✓ / ✗	STPK 02 27-30-15.2.P18.1, Tailgate	26045.063
		1960	4785 x 2055 x 2415	550	165 R13C	✓ / ✓ / ✗	STPK 02 27-30-15.2.P18.1, Ramp	26045.064
		1945	4765 x 2355 x 2415	550	165 R13C	✓ / ✓ / ✗	STPK 02 27-30-18.2.P18.2, Hinged	26047.062
		1945	4765 x 2355 x 2415	550	165 R13C	✓ / ✓ / ✗	STPK 02 27-30-18.2.P18.1, Tailgate	26047.063
		1890	4785 x 2355 x 2415	550	165 R13C	✓ / ✓ / ✗	STPK 02 27-30-18.2.P18.1, Ramp	26047.064

7 Bumper

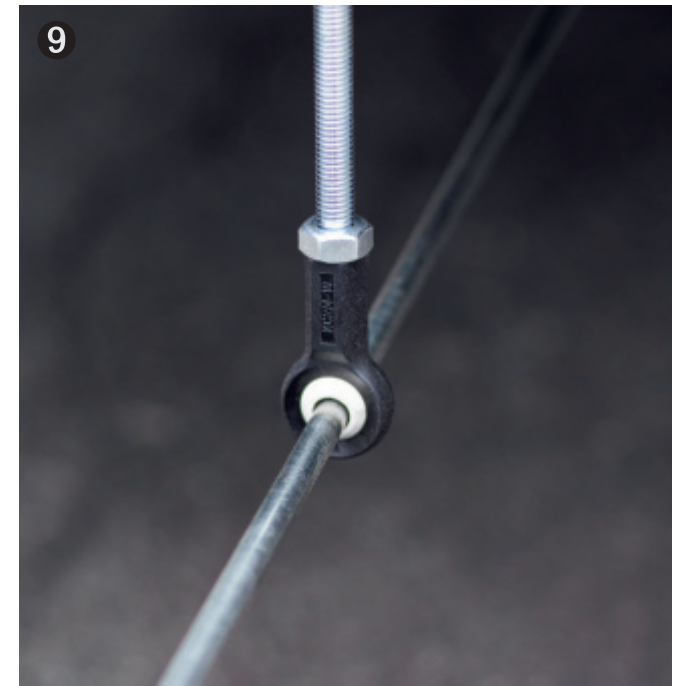
The elastic bumper, which is mounted on the platform, protects the cargo trailer from damage during backwards manoeuvring or loading.

8 Ring screw

Eight individually adjustable ring screws allow for the the transported goods to be fixed in every position in the cargo superstructure. No tools necessary for adjusting.

9 Main joint

The brake rigging is passed through a small ball joint and thereby prevents the brake from engaging unintentionally while driving over uneven surfaces.





OPTIONAL ADAPTER BEAMS

The STEMA S-BOX offers **several lashing options** to transport a wide variety of goods safely. For special applications, we have developed **separately available** adapter beams for the use of **blocking rods**, which are inserted directly into our existing notch system. Thus the box walls are decoupled and do not have to be drilled, screwed or glued afterwards.

DESIGN CARGO INDIVIDUALLY.

The large, dimensionally stable outer surfaces of the box trailer are made to be designed according to **your wishes**. Simply send us your print data and we will do the rest. Our vehicle design team guarantees clean execution and **impressive results**.



STEMA ORIGINAL ACCESSORY.



lashing point



telescopic crank supports



drawbar box



aluminium ramps



tension straps



aluminium rims hyperblack / silver



Your STEMA Partner



STEMA reserves the right to make errors and changes.
All dimensions and weights are approximate.
Pictures are samples and may contain special equipment.
Products are subject to continuous technical changes.
No liability for printing errors.

STEMA Metalleichtbau GmbH
Riesaer Straße 50
D-01558 Großenhain
Telefon: +49 3522 3094-0
www.stema.de
info@stema.de